

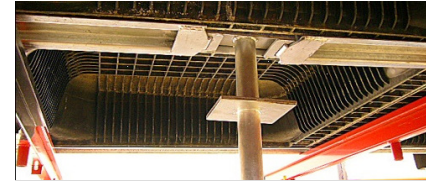
F POST-SHORING WAFFLE SLABS

POST-SHORING - RAILINGS AND PROP HEADS

Complementary formwork and shoring components specially designed for waffle slabs.

This system allows main props, main and secondary beams, rails and moulds to be removed three days after casting.

The slabs keep shored by secondary props, located only under the prop heads (1,80m x 2,50m or 1,60m x 2,50m prop array).



Axial load on post-shoring props in waffle slabs:

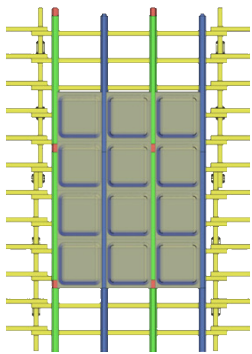
Mould mesh: 0,80m x 0,80m (FG8M) - [prop array = 1,60m x 2,50m]

Mould Type	Slab Total Thickness (Ht)	Mould Height (Hm)	Concrete Top Layer (Lc)	Self Weight/m ²	Prop Load (post-shoring) (KN)
FG8M200	0,250	0,200	0,050	3,15	12,60
	0,275		0,075	3,75	15,00
	0,300		0,100	4,40	17,60
FG8M250	0,300	0,250	0,050	3,80	15,20
	0,325		0,075	4,45	17,80
	0,350		0,100	5,05	20,20
FG8M300	0,350	0,300	0,050	4,30	17,20
	0,375		0,075	4,90	19,60
	0,400		0,100	5,55	22,20
FG8M400	0,450	0,400	0,050	5,60	22,40
	0,475		0,075	6,25	25,00
	0,500		0,100	6,85	27,40
	(m)	(m)	(m)	(KN/m ²)	(KN)

Mould mesh: 0,90m x 0,90m (FG9M) - [prop array = 1,80m x 2,50m]

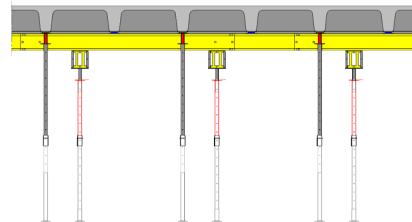
Mould Type	Slab Total Thickness (Ht)	Mould Height (Hm)	Concrete Top Layer (Lc)	Self Weight/m ²	Prop Load (post-shoring) (KN)
FG9M225	0,275	0,225	0,050	3,45	15,53
	0,300		0,075	4,05	18,23
	0,325		0,100	4,65	20,93
FG9M325	0,375	0,325	0,050	4,60	20,70
	0,400		0,075	5,20	23,40
	0,425		0,100	5,85	26,33
FG9M425	0,475	0,425	0,050	5,85	26,33
	0,500		0,075	6,45	29,03
	0,525		0,100	7,10	31,95
	(m)	(m)	(m)	(KN/m ²)	(KN)

Plant

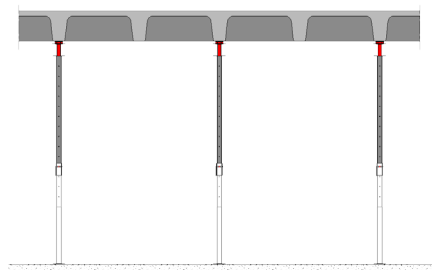


Cut View

1st Stage - Slab Preparation
 Shoring and Post-Shoring

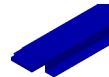


2nd Stage - 3 days after casting
 Post-Shoring

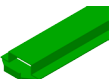


Post-Shoring elements

Rail 2,50 m



Rail 2,35 m



Prop Head

